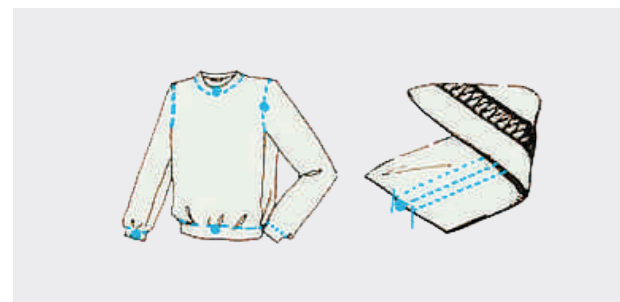


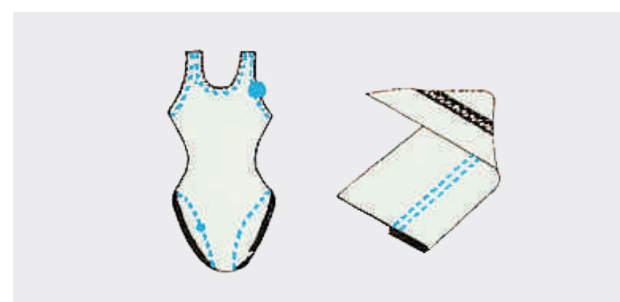
interlock sewing sample



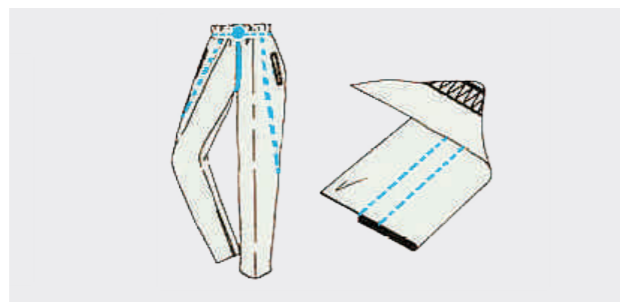
1 suitable for pain seaming of knit and sportwear



3 Suitable for all kinds of casual wear, pleated cuffs, pleated hem



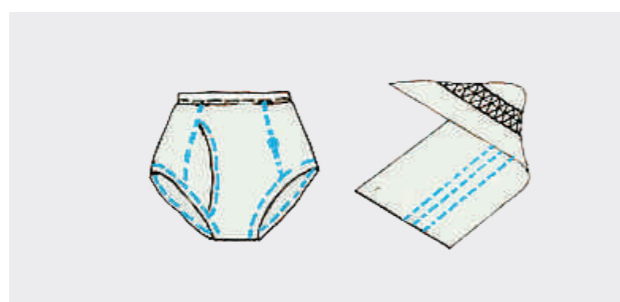
5 Suitable for elastic, swimsuit and rhythmic suit of various sizes



2 Suitable for all kinds of sweatpants and trousers



4 Suitable for all kinds of sportswear, jackets, seam single side and double-side stitch



6 Suitable for all kinds of layering, men's underwear



Jack Wechat

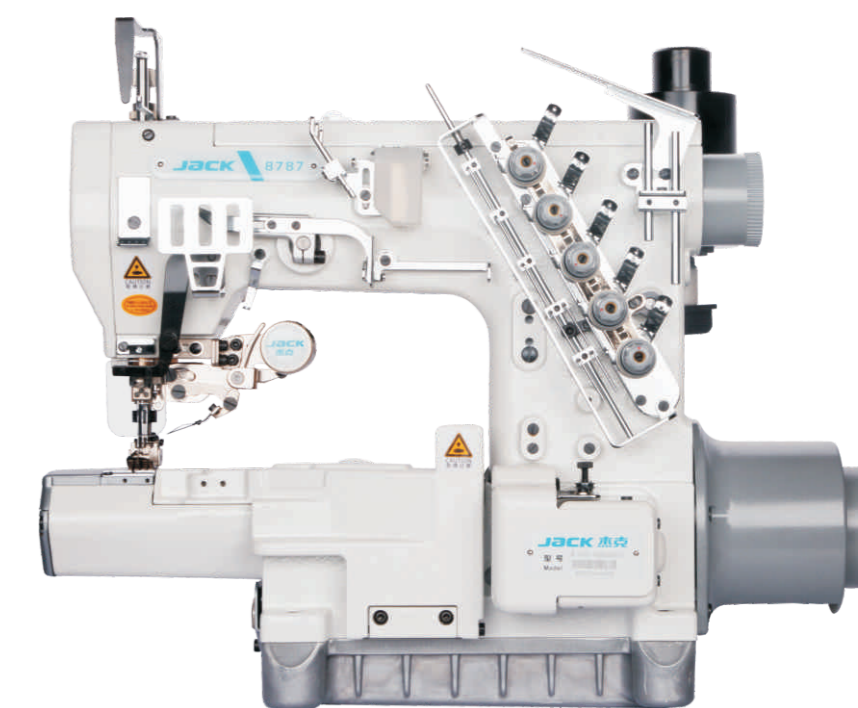


Jack Facebook



Feed-off-arm/cylinder/small cylinder bed interlock machine

Efficiency, quality, user-friendly



| attachment | |
|----------------|-------------------------------------|
| D | direct drive |
| UT | electronic auto-trimmer |
| UT2 | electronic wiper and looper trimmer |
| UTL | pneumatic auto-trimmer |
| PL | rear puller(gear) |
| PR | rear puller (rubber) |
| F | waistband attaching |
| Suction device | |
| AW1S | pneumatic big tube (32MM) |
| AW1L | pneumatic small tube (25MM) |
| AW2S | electronic big tube (32MM) |
| AW2L | electronic small tube (25MM) |

| Sewing function | |
|-----------------|---|
| S | pantry-hose |
| DS | diving suit |
| T1 | Ribbon (lingerie) |
| T2 | tape |
| T3 | Decorative sewing tape, suitable for 7mm ribbon |
| T4 | Top and bottom tape seaming, suitable for 6-8mm ribbon |
| T5 | tape seaming (adjustable press foot), suitable for 7-11mm ribbon |
| 4L10 | covered overlock stitch, the gap between the four rows of hook teeth is 1.0mm |
| 4L15 | covered overlock stitch, the gap between the four rows of hook teeth is 1.5mm |
| 4L20 | covered overlock stitch, the gap between the four rows of hook teeth is 2.0mm |

2019.12

JACK SEWING MACHINE CO.,LTD.

No.1008, Donghai Road East, Jiaojiang District, Taizhou city, Zhejiang, China.
TEL: 0086-576-88177782 88177767
FAX: 0086-576-88177787

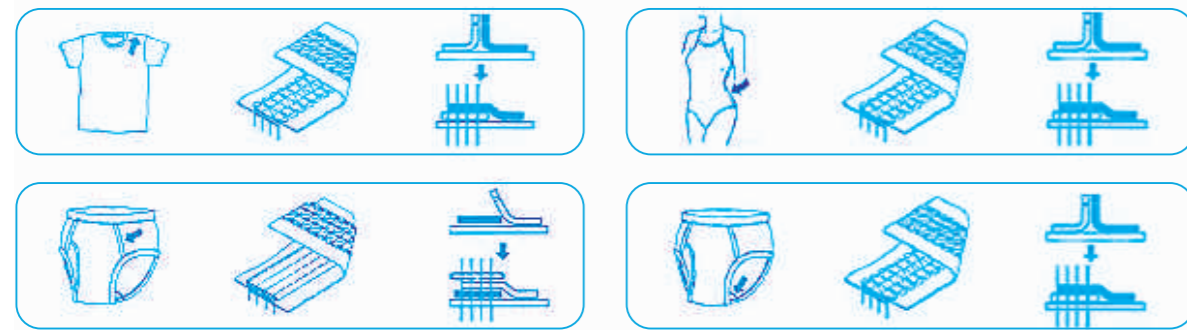
E-mail: sales@chinajack.com
www.chinajack.com

JK-8740-02R-452

Name: 4 needles 6 thread feed-off-arm
Features: Efficiency, quality, user-friendly



Optional AW suction device makes seaming easy and stitch beautiful.



Large operation space design

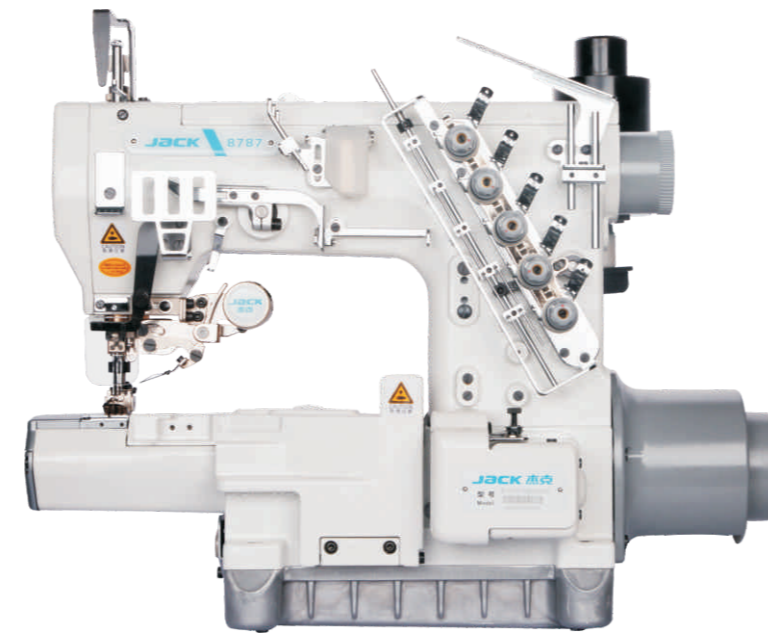
The innovative frame design of the new patent provides a large operating space for sewing, which is more conducive to the sewing of large items and improves work efficiency and sewing effect.

Technical parameters

| Model | Needles | Stitches | Stitch Width (mm) | Stitch Length (mm) | Differential Ratio | Presser Foot Height (mm) | Needle Distance (mm) | Speed (S.p.m) | Optional Device | Suction Device | Procedure |
|-------------|---------|----------|--|--------------------|--------------------|--------------------------|----------------------|---------------|-----------------|------------------------------|---------------------|
| JK-8740-01 | 4 | 6 | 4.8 5.2 6.0 6.4 7.0 8.0 | 1.6-2.5 | 1:0.7-1:0.5 | 6-8 | 30 | 3200 | D UT UTL | AW1L AW1S AW2L AW2S | S DS T1 T2 |
| JK-8740-01H | 4 | 6 | | 1.6-2.5 | 1:0.7-1:0.5 | 6-8 | 30 | 3200 | | | |
| JK-8740-02 | 4 | 6 | | 1.6-2.5 | 1:0.7-1:0.5 | 6-8 | 30 | 3200 | | | |
| JK-8740-02H | 4 | 6 | | 1.6-2.5 | 1:0.7-1:0.5 | 6-8 | 30 | 3200 | | | |
| | | | | 1.6-2.5 | 1:0.7-1:0.5 | 6-8 | 30 | 3200 | | | |

JK-8787-01GBX365/UT

Name: Cylinder bed interlock
Features: Efficiency, quality, user-friendly



1 Bottom threading improved

The elaborately improved way of the bottom threading makes the bottom thread more smooth, so that the thread ash will not run into the trimmer rack, so that the trimmer tangent is more stable, the part life is longer, precise fine tuning out the size of the trimmer.



2 Electromagnetic presser foot lifter

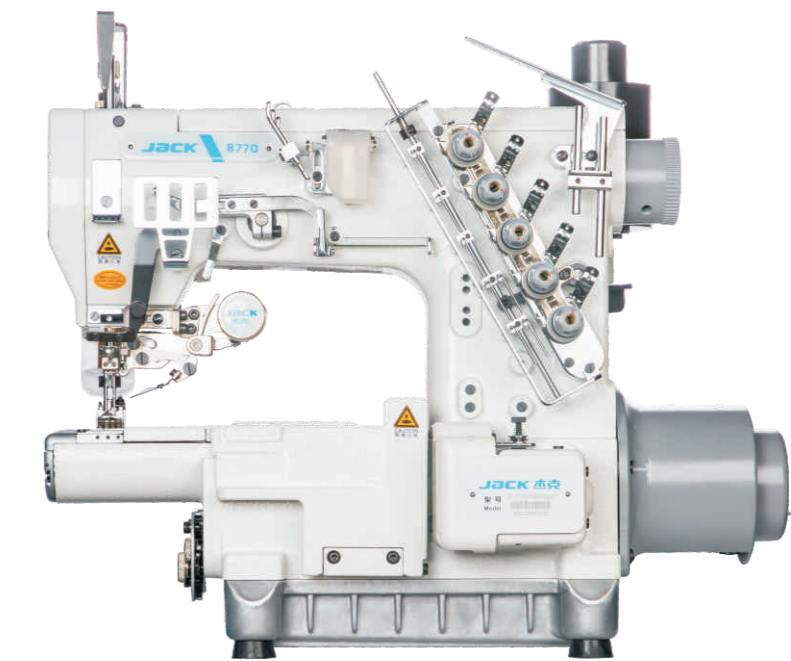
Electromagnetic presser foot lifter, quick and fast.

Technical parameters

| Model | Stitch | Thread | Stitch Length | Stitch Width (mm) | presser Foot Height (mm) | Differential Ration | Speed (S.p.m) | Optional Device | Pulley |
|------------------|--------|--------|---------------|-------------------|--------------------------|---------------------|---------------|-----------------------|----------|
| JK-8787-01G-356 | 3 | 5 | 1.4-4.5 | 5.6 | 7 | 0.8-1.4 | 4500 | D UT UT2 UTL | PL PR |
| JK-8787-01G-364 | 3 | 5 | 1.4-4.5 | 6.4 | 7 | 0.8-1.4 | 4500 | | |
| JK-8787-02B-356 | 3 | 5 | 1.4-4.5 | 5.6 | 7 | 0.8-1.4 | 4500 | | |
| JK-8787-02B-364 | 3 | 5 | 1.4-4.5 | 6.4 | 7 | 0.8-1.4 | 4500 | | |
| JK-8787-35AC-356 | 3 | 5 | 1.4-4.5 | 5.6 | 7 | 0.8-1.4 | 4500 | | |
| JK-8787-35AC-364 | 3 | 5 | 1.4-4.5 | 6.4 | 7 | 0.8-1.4 | 4500 | | |

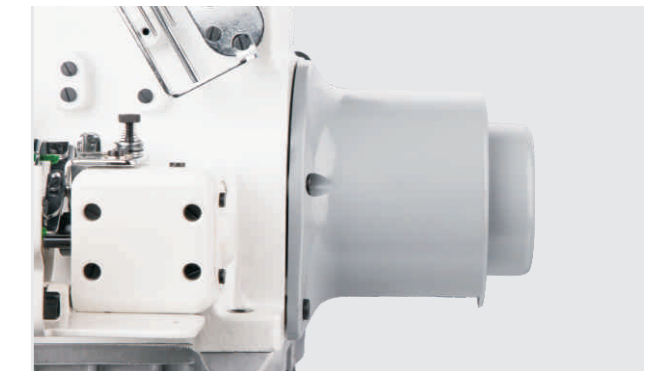
JK-8770-01GBX365/UT

Name: Small cylinder bed interlock
Features: Efficiency, quality, user-friendly



1 Front type bottom line divider

The bottom thread cam is outside design, which can be easily clean thread from cam and adjusted easily. The adjustable bottom threading frame can adjust the bottom thread more precisely.



2 Mini direct drive servo motor

Direct drive externally connected with mini servo motor, hidden installation, responsive, silent, accurate positioning.

Technical parameters

| Model | Stitch | Thread | Stitch Length | Stitch Width (mm) | Presser Foot Height (mm) | Differential Ration | Speed (S.p.m) | Optional Device |
|-----------------|--------|--------|---------------|-------------------|--------------------------|---------------------|---------------|-----------------------|
| JK-8770-01G-356 | 3 | 5 | 1.4-4.5 | 5.6 | 7 | 0.8-1.4 | 4200 | D UT UT2 UTL |
| JK-8770-01G-364 | 3 | 5 | 1.4-4.5 | 6.4 | 7 | 0.8-1.4 | 4200 | |